

## From waste arrival to fixation

### 1. Incinerator ash haulage

Completely airtight to prevent any waste leakage whatsoever



### 6. Dedicated electric furnace

Stable furnace operation by means of voltage, gas pressure, weight, electrode, other control



### 2. Waste arrival

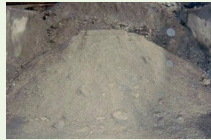
Different classes of waste – municipal, industrial, contaminated soil – treated accordingly



Waste melted at high temperatures of 1500°C and above, and slag and metals separated



Slag



Incinerator ash



Contaminated soil



Metals

### 3. Removal of foreign matter

Pre-melt processing



### 7. Waste gas and soot treatment

Dioxins in exhaust gasses rendered harmless through reheating and rapid cooling



### 4. Drying

Waste dried after removal of foreign matter



### 8. By-product

Slag recycled, primarily as roadbed material



### 5. Supply to electric furnace

After drying, supply waste to electric furnace

2 dedicated furnaces, 2 ferromanganese furnaces



Metals recycled for recovery of precious metals

